



Electrical Information		
Model No.	ST62-150WS	ST62-300WS
Power Consumption (W)	150W, 120W, 90W (Selectable)	300W, 240W, 180W (Selectable)
Power Supply	SOSEN / Fahold	
Input Voltage	120-277 Vac / 120-347 Vac / 277-480 Vac, 50 / 60 Hz	
Power Factor	>0.95	
Surge Protection	10kV	
Driver Type	Constant current (CC)	
Control	Photocontrol, Plug-and-play Microwave or PIR sensor	
Note	NA	

* The tolerance for power is $\pm 2.5\%$ @100% power (150W/300W).

Optic Information		
LED Type	LED 2835	
Luminous Flux @4000K Ra70 (lm)	23250	46500
Efficacy @4000K Ra70 (lm/W)	155	
Correlated Color Temperature	3000K, 4000K, 5000K Selectable/Amber	
Color Rendering Index	Ra70 (Ra80 optional)	
Beam Angle	R34403 / R34404 / R34405	R65803 / R65804 / R65805
UGR level	NA	

* The tolerance for luminous flux is $\pm 10\%$.

Description

The ST62 is the perfect lighting fixture for all customers, particularly for distribution clients. Its Wattage&CCT selectable function, coupled with intelligent controls such as photocell, PIR and microwave sensors, allowing for significant SKU reduction, optimizing inventory management and offering versatile lighting options. Additionally, the ST62 is designed with installation convenience in mind, featuring tool-free lens and driver replacement. Its IP65 waterproof rating ensures safe outdoor usage.

Key Features

- Light efficiency up to 155lm/W
- CCT selectable: 3000K, 4000K, 5000K
- Multiple distributions to meet various application: T3/T4/T5
- IK08 & IP65 robust protection
- Tool-free replacement of lenses and drivers

Applications

- Parking lot
- Residential street
- Urban area
- Rural roadway
- Plaza

Dimensions and Mount

Product Dimension (mm/inch)	465×334×67 / 18.31×13.15×2.64	574×405×67 / 22.6×15.94×2.64
Luminaire Net Weight (kg/lbs)	4.6 / 10.14	6.5 / 14.33
Export Carton Size (mm/inch)	690×385×125 / 27.17×15.16×4.92	800×455×125 / 31.5×17.91×4.92
Gross Weight (kg/lbs)	5.5 / 12.13	7.7 / 16.98
Mounting Option	Slipfitter Mounting	
	Yoke Mounting	
	Square / Round Pole Mounting	
Material	Aluminum alloy	
	PC lens	
Finish	Powder coating	
Fixture Color	Bronze (RAL8019)	
EPA (ft²)	1.92	2.89
IK Rating	IK08	
IP Rating	IP65	

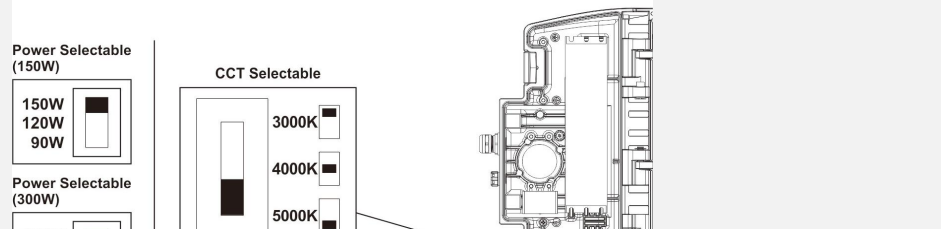
* The tolerance for weight is $\pm 6\%$.

Lifespan and Warranty

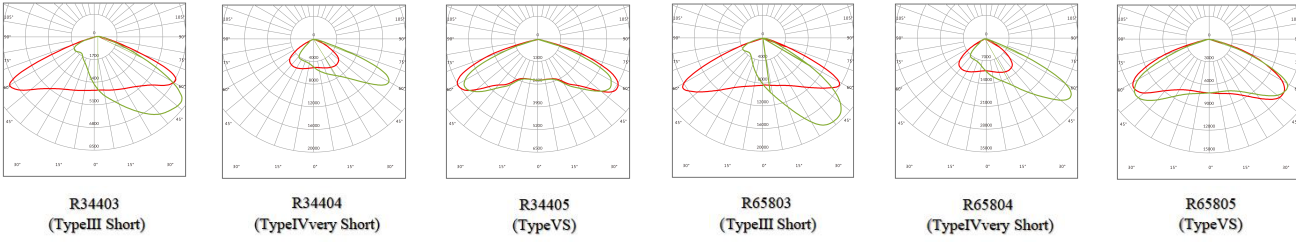
Operating Temperature (°C/°F)	-30 to +50 / -22 to +122
Lifespan of LED @Ta=25°C (hours)	100800hrs-L80
	160800hrs-L70
Warranty (years)	5

New Features

Adjust power and CCT by DIP switch



Photometry



R34403
(TypeIII Short)

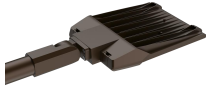
R34404
(TypeIVvery Short)

R34405
(TypeVS)

R65803
(TypeIII Short)

R65804
(TypeIVvery Short)

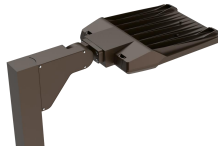
R65805
(TypeVS)



Slipfitter mounting



Yoke mounting



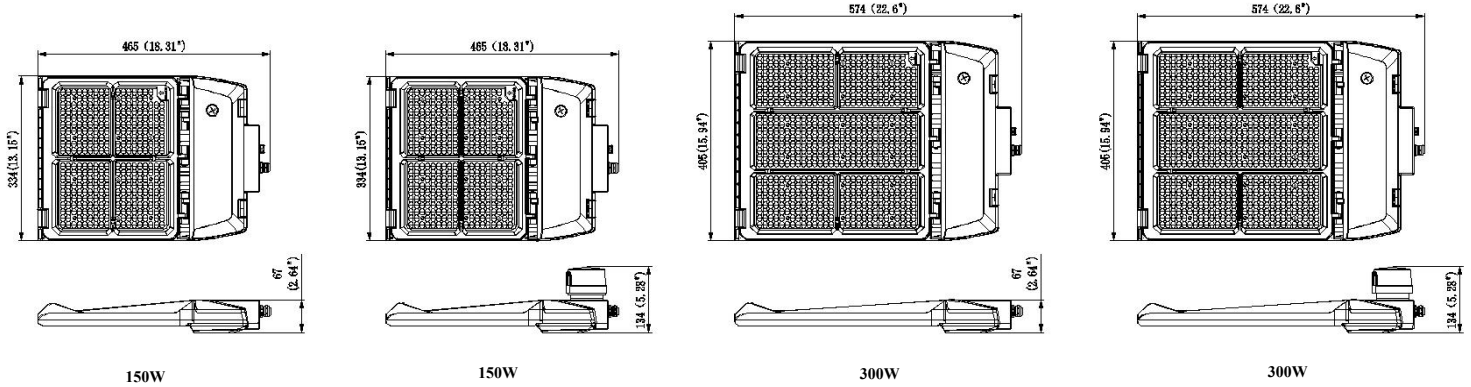
Square pole mounting



Round pole mounting

Dimensions

Unit:mm/inch



Accessories



Slipfitter mounting

Adjustable angle mounting bracket with $\Phi 60$ mm sleeve

Code: SP-F45-01



Slipfitter mounting

Adjustable angle mounting bracket with $\Phi 76$ mm sleeve

Code: SP-F45-02



Yoke Mounting

Wall mounting bracket (large size) made of SPCC material, external dust removal, installation angle is adjustable.

Code: BC-ST62-02



Arm mounting

Excellent anti-corrosion Aluminum alloy material Built for round and square pole

Code: BC-ST62-01



Microwave sensor

12VDC Input, Microwave Sensor Module, for max 15M height

Code: HD07VR-MH



PIR sensor

12VDC Input, PIR Sensor Module, for max 12M height

Code: HD07VR-PH



Photocell

For 90-300W 120-277V version

Code: PS-JL205C



Photocell

For 90-300W 277-480V version

Code: JL-207F



Remote control

Sensor code: HD07VR-PH / HD07VR-MH

Code: HD06R